

## Filter Cartridge Housing

### BECO INTEGRA® CART KCL Range

BECO INTEGRA CART cartridge housings are manufactured of stainless steel AISI 316L and can be used for the filtration of liquids with high flow rates in Life Science applications. This series is available as 1 x 40" version. These housings are ATEX certified.

#### Special Features

- ATEX certified
- The application of material AISI 316L avoids corrosion even at long term use
- Easy and fast cartridge change
- For both ways of cartridges suitable
- The optimized design allows thorough and fast cleaning
- Low product loss thanks to compact design
- Resistant to hot water or steam sterilization

#### Application

The BECO INTEGRA CART KCL cartridge housing is designed for the filtration of media of fluid group 2 according to Pressure Equipment Directive PED 2014/68/EU. The housing is installed vertically. The split dome enables a fast cartridge change.

Thanks to an optimized filtrate chamber design and a special surface treatment, the housings are very easy to clean.

The BECO INTEGRA CART KCL cartridge housings are suitable for applications with BECO PROTECT® CL Coreless wrapped filter cartridges.

Other versions and further components for expansion to complete systems are available on request and would be customized according to specification.

#### Technical Data

<b>Max. permissible operating pressure and temperature:</b>	Liquid: max. 145 psi (10 bar)
	Gas: max. 58 psi (4 bar)
	14°F–302°F
	(-10°C–150°C)



BECO INTEGRA CART KCL cartridge housing: 1 x 40" filter cartridge (V-clamp)

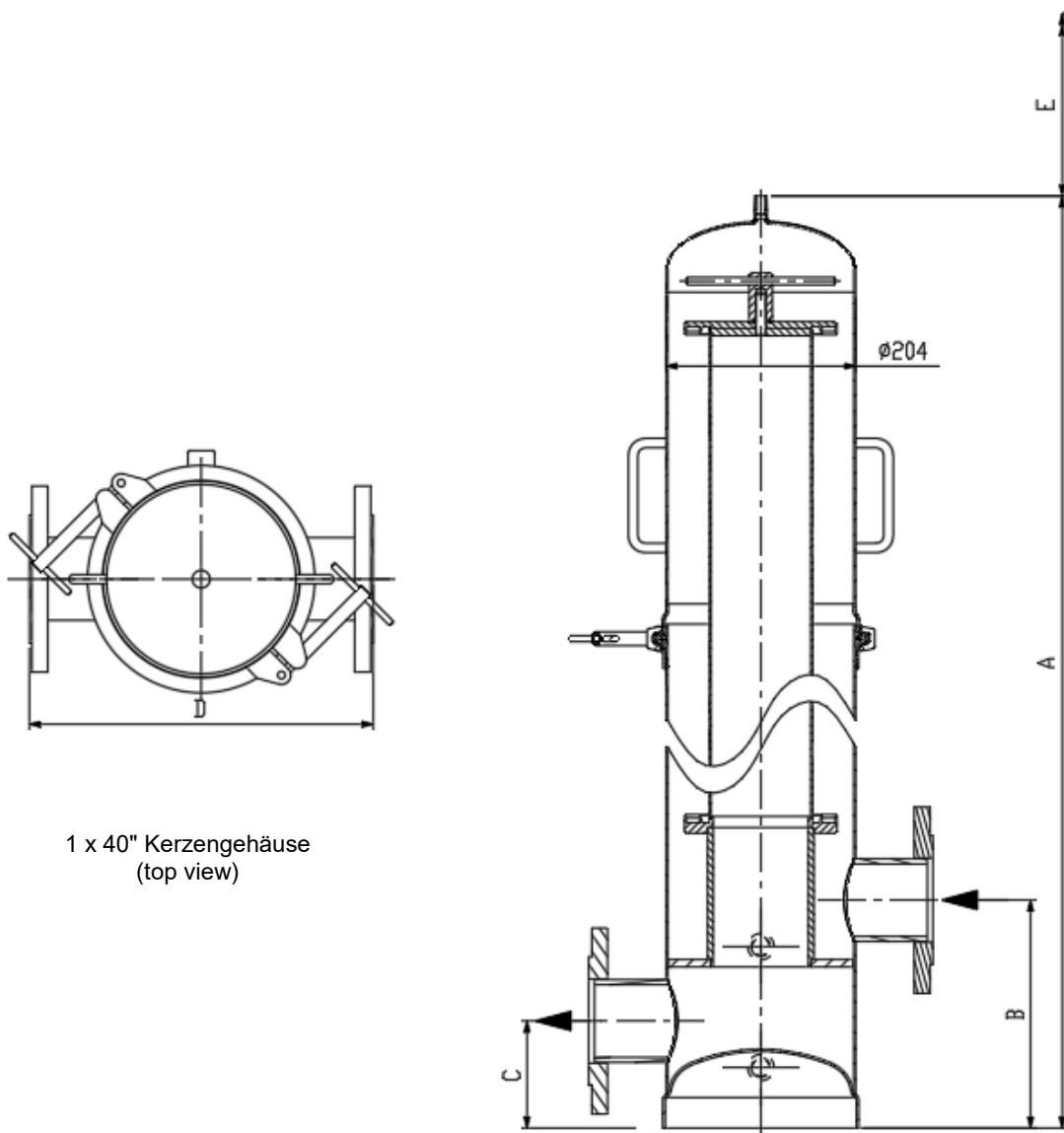
<b>Product contacting parts:</b>	Stainless steel AISI 316L
<b>Gaskets:</b>	EPDM (Silicone, Viton available upon request)
<b>Housing suitable for:</b>	Media of fluid group 2, liquid, according to PED 2014/68/EU <u>exception:</u> fluid group 2, explosive and oxidizing
<b>ATEX classification:</b>	II 2 GD c X
<b>Housing connection:</b>	Flange 3" acc. to EN1092-1 PN16, (threaded male connection acc. to DIN 11851 on request)
<b>Housing closure:</b>	1 x 40": V-clamp (alternatives on request)
<b>Vent connection:</b>	½" BSPM with plug
<b>Drain:</b>	½" BSPM with plug
<b>Fittings:</b>	Vent and drain units are available at special request



Powering Business Worldwide

Article No.	Qty	Cartr. length	Dimensions					Connections	Volume	Weight	Perm. pressure psi (bar) liquid / gaseous
			in	A	B	C	D				
						inch (mm)	E	In-/Outlet	gal (l)	lb (kg)	
KCL14XF8	1	40	58.18 (1.478)	51.26 (1302)	7.13 (181)	7.91 (201)	39.37 (1000)	3"	115 (43.5)	84.7 (38.4)	145 / 58 (10 / 4)
KCL14XG8	1	40	58.18 (1.478)	51.26 (1302)	7.13 (181)	7.91 (201)	39.37 (1000)	3"	115 (43.5)	84.7 (38.4)	145 / 58 (10 / 4)

### BECO INTEGRA CART KCL filter cartridge housings in flange design



1 x 40" Kerzengehäuse  
(top view)

1 x 40" Kerzengehäuse  
(front view)





Powering Business Worldwide

**North America**

44 Apple Street  
Tinton Falls, NJ 07724  
Toll Free: 800 656-3344  
(North America only)  
Tel: +1 732 212-4700

**Europe/Africa/Middle East**

Auf der Heide 2  
53947 Nettersheim, Germany  
Tel: +49 2486 809-0

Friedensstraße 41  
68804 Altlußheim, Germany  
Tel: +49 6205 2094-0

An den Nahewiesen 24  
55450 Langenlonsheim, Germany  
Tel: +49 6704 204-0

**China**

No. 3, Lane 280,  
Linhong Road  
Changning District, 200335  
Shanghai, P.R. China  
Tel: +86 21 5200-0099

**Singapore**

100G Pasir Panjang Road #07-08  
Singapore 118523  
Tel: +65 6825-1668

**Brazil**

Av. Ermano Marchetti, 1435 -  
Água Branca, São Paulo - SP,  
05038-001, Brazil  
Tel: +55 11 3616-8461

**For more information, please  
email us at [filtration@eaton.com](mailto:filtration@eaton.com)  
or visit [www.eaton.com/filtration](http://www.eaton.com/filtration)**

© 2020 Eaton. All rights reserved. All trademarks and registered trademarks are the property of their respective owners. All information and recommendations appearing in this brochure concerning the use of products described herein are based on tests believed to be reliable. However, it is the user's responsibility to determine the suitability for his own use of such products. Since the actual use by others is beyond our control, no guarantee, expressed or implied, is made by Eaton as to the effects of such use or the results to be obtained. Eaton assumes no liability arising out of the use by others of such products. Nor is the information herein to be construed as absolutely complete, since additional information may be necessary or desirable when particular or exceptional conditions or circumstances exist or because of applicable laws or government regulations.

EN  
1 A 7.2.9  
06-2020