

## HIGH PERFORMANCE SERIES



**\*SERIES R8 / B8**  
High Performance Ball Valve  
Full/Standard Port  
Sizes from 1/4" to 3"



**SERIES R9 / B9**  
Direct Mounting Pad  
Full/Standard Port  
Sizes from 1/2" to 2"



**SERIES L8**  
Instrumentation Ball Valve  
with Compression Ends  
Sizes from 1/4" to 1"



**SERIES L6**  
Instrumentation Ball Valve  
with Compression Ends  
Sizes 1/4" to 1"



**SERIES F9 / FB9**  
Fire-Safe API 607  
Full/Standard Port  
Sizes from 1/4" to 2"



**SERIES D8 / T7**  
Diverter/3-Way  
Bottom Port  
Sizes from 1/4" to 2"

\*(Available with Stainless Steel, Carbon Steel, Alloy 20 or Hastelloy Materials)

## HIGH PRESSURE SERIES



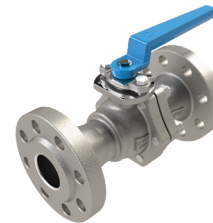
**SERIES H7**  
High Pressure Ball Valve  
Standard Port 6000 psi  
Sizes from 1/2" to 2"



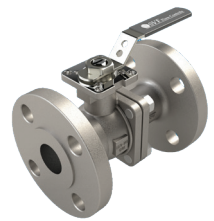
**SERIES P4**  
High Pressure Ball Valve  
Standard Port 5000 psi  
Sizes from 1/2" to 1"



**SERIES HBEV**  
Seal Welded Ball Valve  
Fire-Safe API 607, Full Port 6000 psi  
Sizes from 1/2" to 2"



**SERIES B43**  
ANSI Class 600  
Fire-Safe API 607 Full Port  
Sizes from 1/2" to 8"



**SERIES B42**  
ANSI Class 300  
Fire-Safe API 607 Full Port  
Sizes from 1/2" to 8"



**SERIES 20SSFL-CSFL**  
ANSI Class 150  
Full Port  
Sizes from 1" to 6"



**SERIES 41**  
ANSI Class 150, Fire-Safe API 607  
Standard Port  
Sizes from 1/2" to 6"



**SERIES B41**  
ANSI Class 150, Fire-Safe API 607  
Full Port  
Sizes from 1/2" to 8"

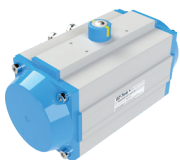


**SERIES VB41**  
Characterized Control "V"  
Flanged Ball Valve  
Sizes from 1/4" to 3"

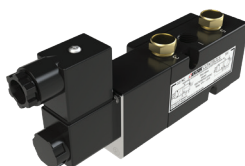


**SERIES MB51**  
ANSI Class 150  
Multi-Port  
Sizes from 1" to 6"

## ACTUATORS AND CONTROLS



**EZ-Tork**  
Pneumatic Actuator



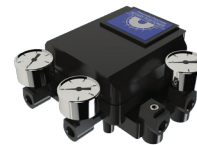
**VECTOR Series**  
Pilot Valves



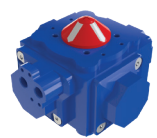
**E-Series**  
Electric Actuator



**NEXUS-LP/LPX**  
Discrete Valve Controller



**EXACTXL / P3**  
Pneumatic / Electro-  
Pneumatic Positioner



**Quad4**  
Pneumatic Actuator

## SPECIALTY VALVE SERIES



**SERIES N8 / BN8**  
Steam and Thermal Fluid  
Standard/Full Port  
Sizes from 1/4" to 3"



**SERIES V8**  
Characterized Control "V"  
Ball Valve  
Sizes from 1/4" to 3"



**SERIES C8**  
Chlorine Service  
Standard Port  
Sizes from 1/4" to 2"



**SERIES 7B41**  
Hydrogen Peroxide, ANSI Class 150  
Full Port Ball Valve  
Sizes from 1/2" to 8"



**SERIES K8**  
Cryogenic  
Standard Port  
Sizes from 1/2" to 4"

## GENERAL PURPOSE



**SERIES 15SS**  
One Piece Valve  
Standard Port  
Sizes from 1/4" to 2"



**SERIES 20SS**  
Two Piece Valve  
Full Port  
Sizes from 1/4" to 3"



**SERIES 30SS**  
Three Piece Valve  
Full Port  
Sizes from 1/4" to 4"



**SERIES MZ9**  
Multi-port / Full Port  
Sizes from 1/2" to 2"



**SERIES BZ9**  
Bronze Ball Valve  
Full Port  
Sizes from 1/2" to 2"



**SERIES SL**  
StreamLine Series  
Butterfly Valve  
Sizes from 2" to 24"



**SERIES 500F**  
Forged Gate Valve  
Sizes from 1/4" to 2"



**SERIES 505F**  
Forged Globe Valve  
Sizes from 1/4" to 2"



**SERIES 522F**  
Forged Check Valve  
Sizes from 1/4" to 2"



**SERIES 400**  
Cast Steel  
ANSI Class 150 Gate Valve  
Sizes from 2" to 12"



**SERIES 405**  
Cast Steel  
ANSI Class 150 Globe Valve  
Sizes from 2" to 12"



**SERIES 422**  
Cast Steel  
NSI Class 150 Check Valve  
Sizes from 2" to 12"



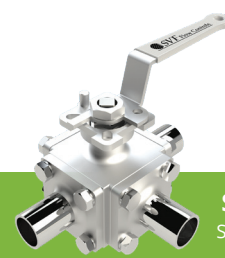
The *CleanTech* product line is designed for applications in the Food and Beverage, Flavors and Fragrances, and Semi-conductor industries.



**SERIES SB9B**  
Sanitary Ball Valve  
Triclamp



**SERIES SB9**  
Sanitary Ball Valve  
Extended Tube O.D.



**SERIES SMC9**  
Sanitary Ball Valve  
Multi Port